

Prevent corrosive sewage gasses from reaching control panels



The **TESCONNEX**[®] Sump Termination Panel is a NEMA-type 3RX cable entry cabinet with two physically separate sections designed to isolate potentially hazardous or corrosive sewage gasses from electrical cable termination points and vent the gasses into atmosphere.

With the cables joined at a termination block, the need to splice resin sealed cables is eliminated.

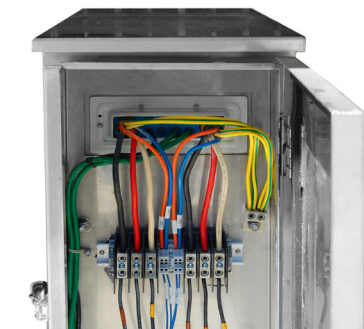
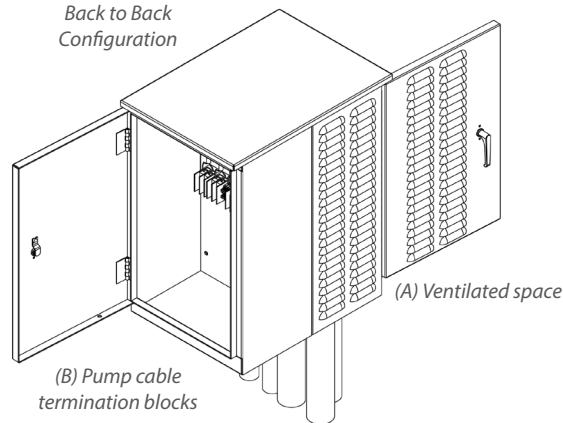
The first section (A) is a ventilated space suitable for a Class I, Div. II hazardous area. The second section (B) includes pump cable termination blocks rated for a minimum of 150% of pump FLA.

The panel itself is constructed of durable 316 stainless steel or powder-coated aluminum suitable for harsh industrial environments.

Applications

- » Waste Water Lift Stations
- » Storm Water Lift Stations
- » Water Pumping Plants

Back to Back Configuration



Side by Side Configuration

Features

- » Dual seals between conduit entry and protected area
- » Rated NEMA-type 3RX
- » 316 Stainless Steel or aluminum
- » Custom Sizes
- » Three-point, vandal-resistant, pad lockable door
- » Barrier for pump cable to pass through sections
- » Roxtec[®] flange-style sealing plates

Benefits

- » Vents sewage gasses to atmosphere
- » Eliminates splicing of resin-sealed submersible cables

Specifications

- » Continuous welded seams
- » Fully framed side hinged outer door for flush fit with top drip lip & closed cell neoprene flange compressed gaskets
- » Removable backpan mounted on 4 welded ¼" studs
- » All terminals are permanently labeled
- » Custom colors and sizes available



Regional Offices