



Model 24-200LBS

- » Built to UL 508A standards
- » Factory wired and tested before shipment
- » May be rated at 100 amp or 200 amp
- » Small, low-profile and attractive with no exposed fasteners
- » Self-contained
- » Meets EUSERC Requirements (Electric Utility Service Equipment Requirements Committee)

TESCOFLEX[®] low-profile, single-meter underground service distribution and control pedestals are used for a wide variety of municipal applications. The 24-200LBS single meter TESCOFLEX[®] low-profile pedestal provides power distribution and metering rated for 120 to 480 volts; single phase or three phase applications; 1, 2 or 3 pole main breakers; and may be rated at 100 amp or 200 amp.

TESCOFLEX[®] pedestals are constructed of the highest grade of materials using hot-dipped galvanized steel, stainless steel, or aluminum. Our coatings will withstand the most stringent testing applied to outdoor enclosures and meet or exceed state specifications. The wide range of options we can provide will allow for maximum utilization of your space.

Call us and see for yourself how Tesco Controls can make a difference on your next project.

Applications

- » Airport Beacon Systems
- » Athletic Field/Stadium Lighting
- » CATV Termination
- » Cellular
- » Flashing Beacon Controls
- » Landscape Irrigation
- » Parking Lot Lighting
- » Residential Applications
- » Sign Lighting
- » Street Lighting
- » Storm Water Lift Stations
- » Tennis Court Lighting & Control
- » Traffic Signals
- » Waste Water Lift Stations
- » Water Pumping Plants



Model 24-200LB

Features

- » Low Profile
- » No exposed fasteners
- » Hot-dipped galvanized, aluminum or stainless steel
- » Durable all welded construction
- » UL approved copper cable bussing and control wiring
- » Circuit breakers cable-in cable-out type
- » Factory wired and tested before shipment
- » Meets EUSERC requirements (Electric Utility Service Equipment Requirements Committee)
- » Built to UL 508A Standards
- » Pad-lockable 3-pt latch

Component Options

- » Breakers
- » Contactors
- » Switches
- » Relays
- » Photo cells
- » Time clocks
- » Time delays
- » Motor controls
- » Fans
- » Heaters
- » Thermostats
- » Terminal blocks
- » Flasher controls
- » Receptacles
- » Generator receptacles
- » Transformers
- » Transfer Switches



Tesco Controls, Inc.
8440 Florin Road
Sacramento, CA 95828
(916) 395-8800
www.TescoControls.com

Regional Offices

42015 Remington Ave. Suite 102
Temecula, CA 92590
(951) 308-6450

1315-B Dayton St.
Salinas, CA 93901
(831) 754-6838

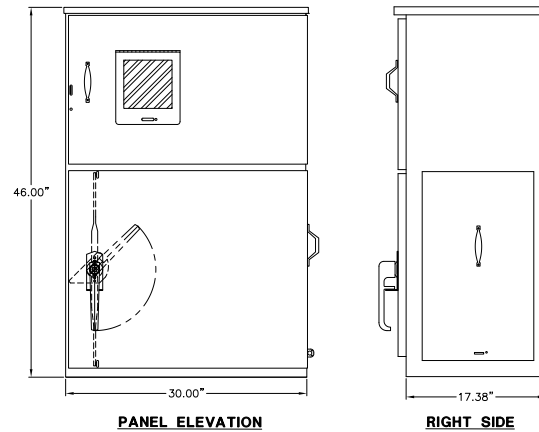
213 Sage St.
Carson City, NV 89706
(800) 94-TESCO

10699 Airline Hwy. Suite B
Baton Rouge, LA 70816
(800) 94-TESCO



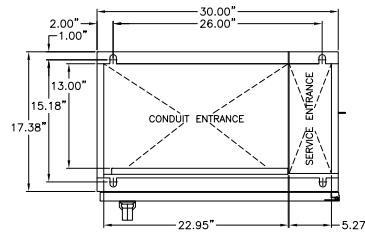
Structural Options

- » 30 x 46 x 18
- » 30 x 46 x 24
- » 36 x 46 x 18
- » 36 x 46 x 24
- » Right Hand or Left hand hinge
- » Custom colors available
- » Additional sections may be added to house more components
- » Additional options for vandalism protection available
- » May also be built as a dual meter



PANEL ELEVATION

RIGHT SIDE



PANEL BASE PLAN

Specifications

- » Main breakers shall be 1, 2 or 3 pole
- » May be rated 120 volt up to 480 volt
- » Single or three phase
- » May be rated at 100 amp or 200 amp
- » Continuous welded seams
- » Fully framed side hinged outer door for flush fit with top drip lip & closed cell neoprene flange compressed gaskets
- » Separate pull section
- » Interior of service enclosure shall be fabricated from cold rolled steel & powder coated white
- » Full length deadfront with stainless steel hinge and ¼ turn latch & knurled knobs
- » Deadfront hinged on same side as the front door and opens up to 120 degrees
- » Completely prewired in the factory
- » Wiring will be to NEMA IIB standards showing external connections & external equipment

Custom options are available. Contact Tesco Controls, Inc. for more information:

916-395-8800 | sales@tescocontrols.com | www.tescocontrols.com | 8440 Florin Road, Sacramento, CA 95828

24-200LBS TESCOFLEX SINGLE METER PEDESTAL

STANDARD SIZES UP TO 200AMP UTILITY PAD-MOUNT TYPE 3R ENCLOSURES

Enclosure Catalog Number	Gauge	Enclosure Size W x H x D inch	**Millimeter
24-200LBS 304618	12	30 x 46 x 18	762 x 1168 x 457
24-200LB* 304624	12	30 x 46 x 24	762 x 1168 x 610
24-200LBS 364618	12	36 x 46 x 18	915 x 1168 x 457
24-200LBS 364624	12	36 x 46 x 24	915 x 1168 x 610

*Consists of two non-utility service compartments (back-to-back configuration); others have single non-utility service compartment

**Millimeter dimensions are approximate and for reference only; do not convert metric dimensions to inch.